

# **Bromsgrove District Council**

## **Meeting of the Planning Committee**

**21<sup>st</sup> December 2020**

20/01041/FUL

Development of 1 dwelling house (part-retrospective) resubmission of 19/01002/FUL

Dellow Grove, Alvechurch, B48 7NR

Recommendation: Approve

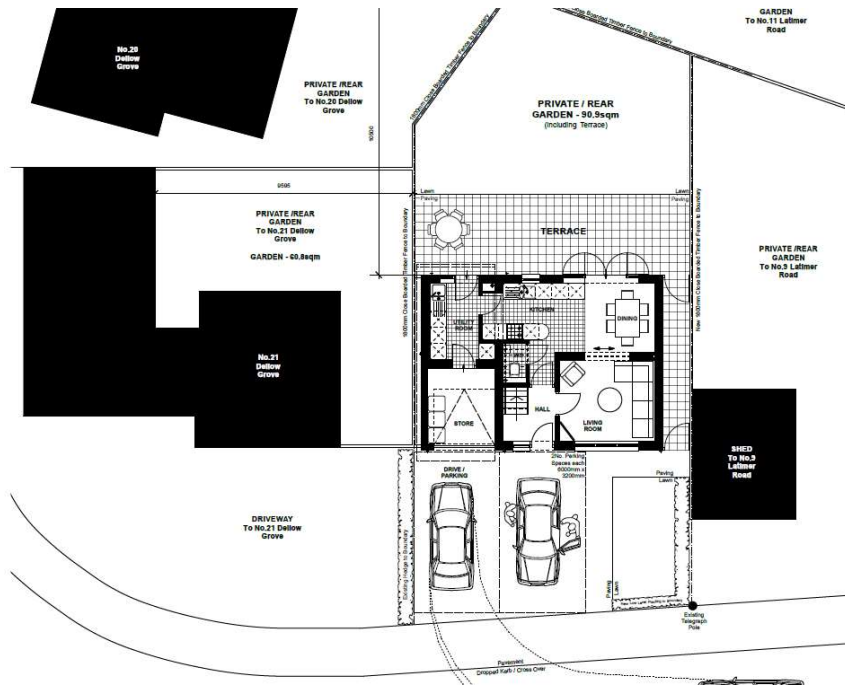
# Location Plan



# Satellite View



# Approved and Proposed Site Plans



Approved Site Plan



Proposed Site Plan

# Approved and Proposed Elevations

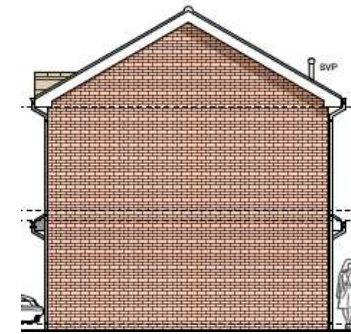


Approved Front Elevation

Approved Rear Elevation



Approved Side Elevation  
(West)



Approved Side Elevation  
(East)



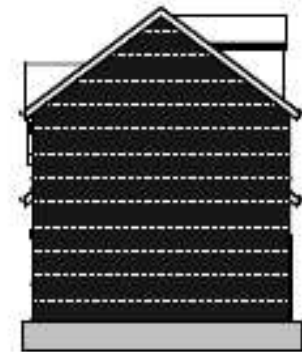
Proposed Front Elevation



Proposed Rear Elevation

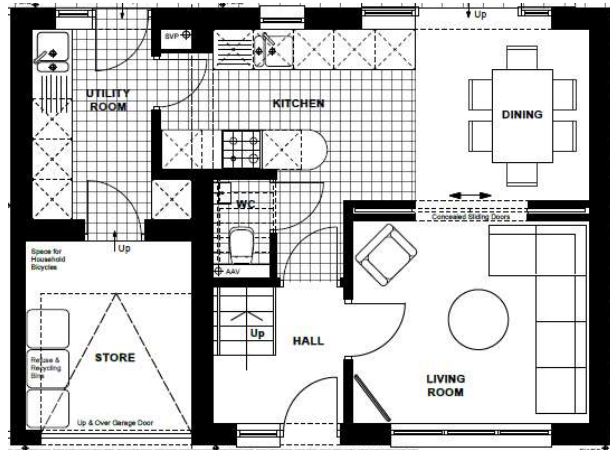


Proposed Side Elevation  
(West)

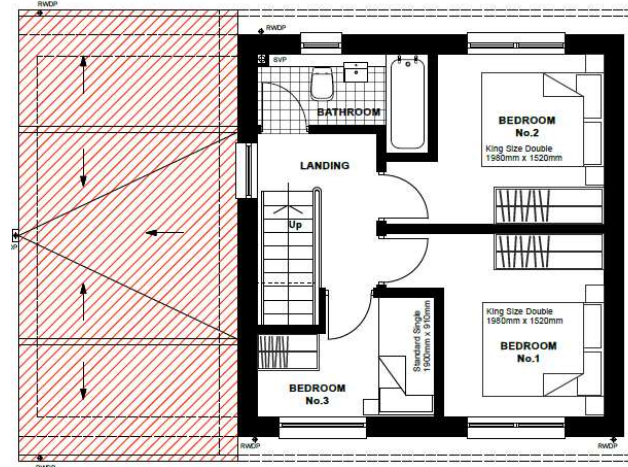


Proposed Side Elevation  
(East)

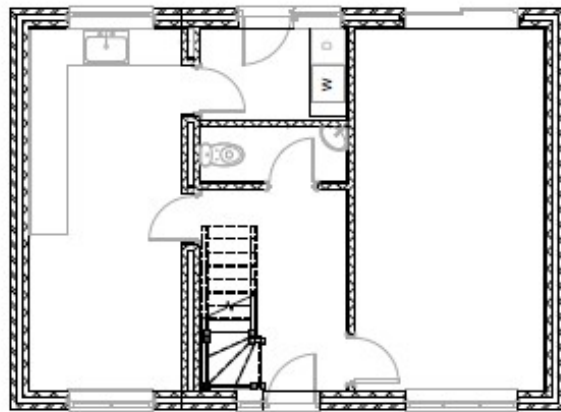
# Approved and Proposed Floor Plans



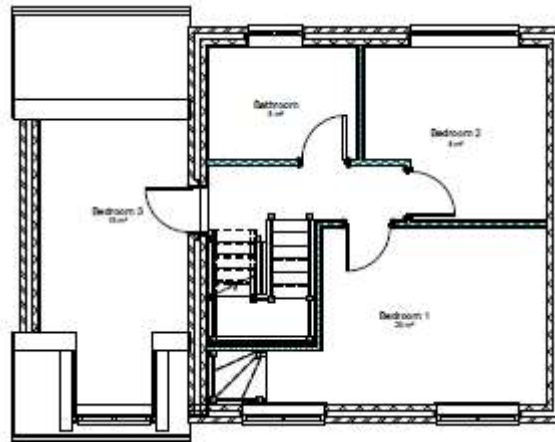
Approved Ground Floor Plan



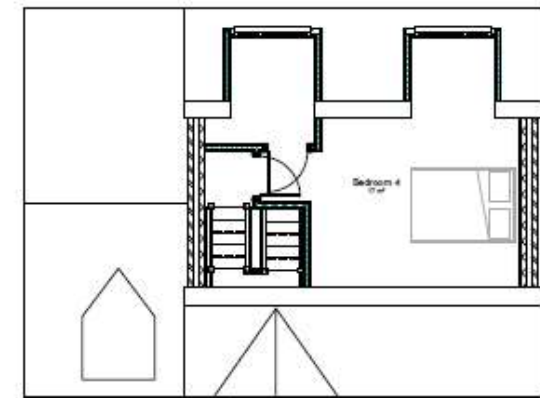
Approved Ground Floor Plan



Proposed Ground Floor Plan



Proposed First Floor Plan



Proposed Loft Plan

# Residential Amenity





# Photos



# Photos

